

# CBI

## CLEAN BURNING IGNITOR (CBI)

### FORMULATION:

---

Nitrocellulose	98.0 min.
Diphenylamine	1.50 +/- 1.0
Potassium Nitrate	0.1max.
Graphite glaze	0.2 added

### SHAPE

---

Single perforated flake

### COLOR

---

Yellow, green, blue

### DIMENSIONS

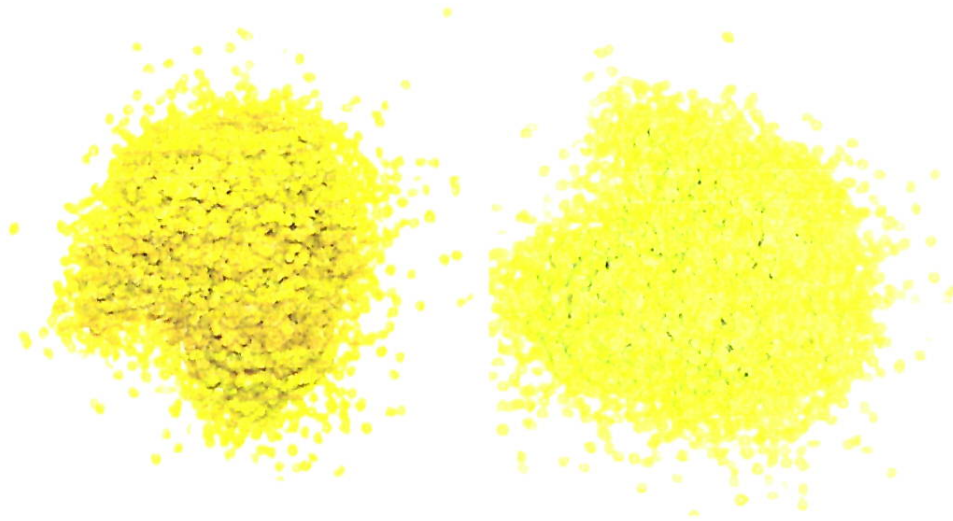
---

Usage	Length (in)	Diameter (in)	Perf Diameter (in)	Inner (in)	Web Outer (in)	Average (in)	# of Perfs	Shape
155MM	0.0040	0.0800	0.0180	n/a	n/a	n/a	1	flake
Igniter Charge	0.0040	0.0550	0.0100	n/a	n/a	n/a	1	flake

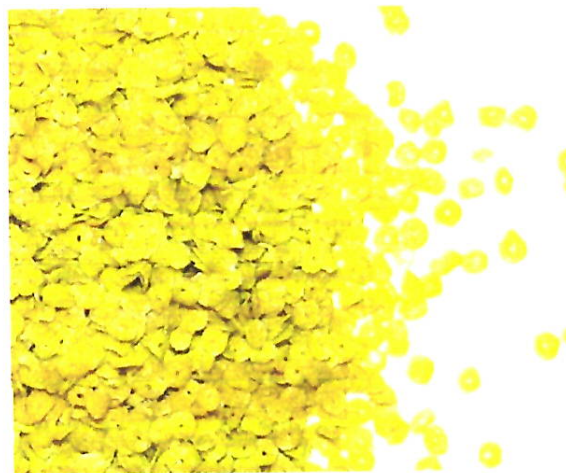
**CBI PROPELLANT**

---

*CBI Flake:*



*Photos depict the color variation normally seen with CBI Flake Propellant*

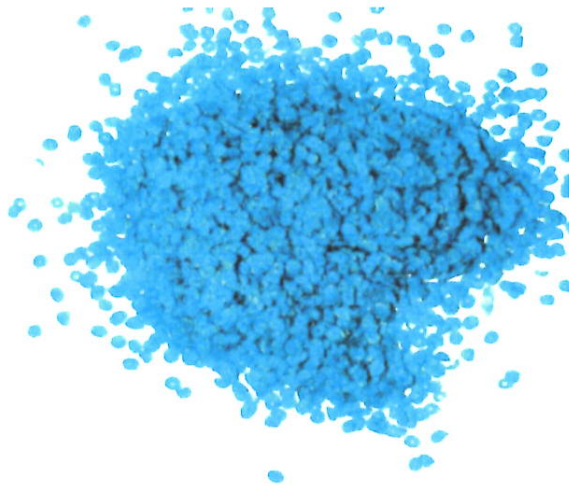


**CLOSE-UP OF CBI FLAKE**

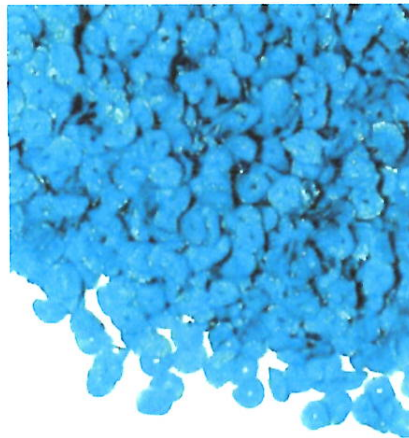
**DISCOLORATION IN CBI PROPELLANT**

---

*Blue Colored CBI Flake: A blue color change has been observed in the CBI igniter propellant in the M119A2 propelling charges stored in Southwest Asia. This phenomenon has only been seen in the M119A2 propelling charge "Y" lots. The color change has no correlation to diminished stability.*



*Actual size*



*Close-up of Blue CBI*